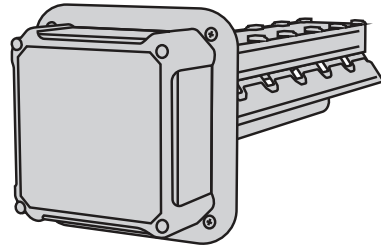


FRESH-AIRE UV
The Indoor Air Quality Expert

APCO-ONE

AIR TREATMENT SYSTEM



APCO-ONE reduces odors (VOCs) and biological contaminants such as mold, bacteria, viruses, and allergens in indoor air. The system is installed in the duct work of the central air system or over the evaporator coil for coil disinfection. The award-winning design of APCO-ONE uses a unique combination of UVC light and lifetime activated carbon cells to clean the air. APCO-ONE includes an LED indicator that changes color and/or flashes when the UV lamp needs to be changed or there is a system fault.

US patent #7,704,463

EPA
Est. Reg. No.
075179-FL-002



IMPORTANT!

- Only qualified technicians should install this product*
- Install in accordance with relevant building codes
- Read instructions carefully including safety warnings

WARNING!

PROTECT EYES FROM UV LIGHT
TURN OFF UNIT OR DISCONNECT
BEFORE SERVICING

*Installation of this product by anyone other than licensed HVAC or electrical contractors voids warranty.
LIT-FAUV-APCO-ONE-MAN 010424

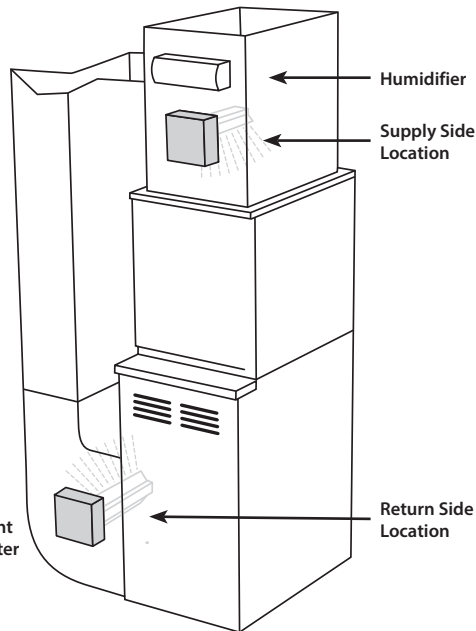
1 Installation Notes

APCO-ONE is primarily installed on the supply side duct just above the air system (upstream of a humidifier if there is one) but can also be installed on the return side if necessary.

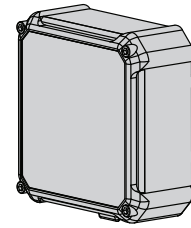
Orient the unit so that the air flows past the UV Light first then into the carbon cells. **Position the main unit so the UV light does not shine directly on non-uv-resistant materials (filters, humidifiers, flex duct, etc).** Ideally the UV light shines on the coil.

LED Status Indicator

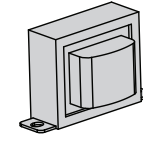
- SOLID BLUE - Normal Operation
- FLASHING BLUE - Replace UV Lamp
- FLASHING RED - UV Lamp Expired
- SOLID RED - UV Lamp Failure



Parts List



A 24 VAC Power Head



D Transformer
(120V, 208V, 240V to 24V)



F Hole Template Decal
4.25" x 4.25"



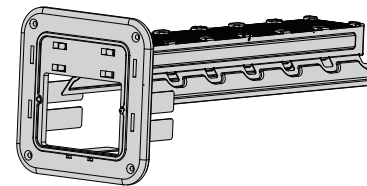
B Power Cord



E Self-tapping Screw



G UV Lamp (2 Year)
Model: TUVL-215

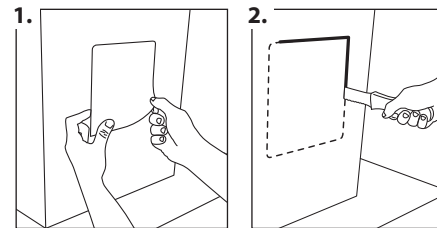


C Duct Mount Wing



H Plastic Quick-nut

2 Duct Mounting



1. Select an appropriate location for APCO-ONE and apply the 4.25" x 4.25" decal template to the flat surface.

2. Cut a hole in the sheet metal or duct board as indicated by the decal template **F**.

IMPORTANT! Remove and dispose of cut-out piece of material.

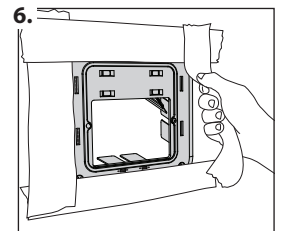
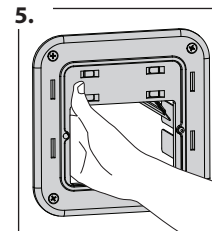
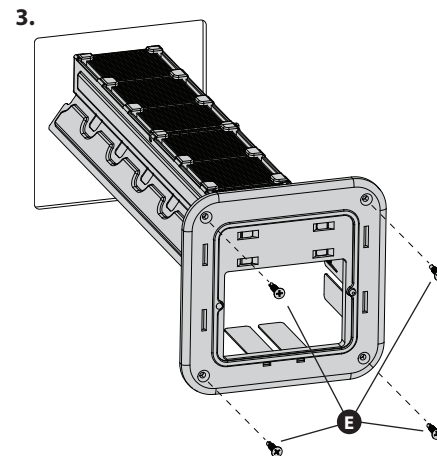
3. For sheet metal duct secure mounting plate with Self-tapping Screws **E**.*

4. Insert the Duct Mount Wing **C** into the duct.

5. Bend Duct Mount Wing fingers around the edges of the hole to secure mounting plate.

6. Use tape for duct board installations, avoid taping over gasket and latching openings.

* If the backing plate can't be used install directly with 4 Self-tapping Screws **E**.

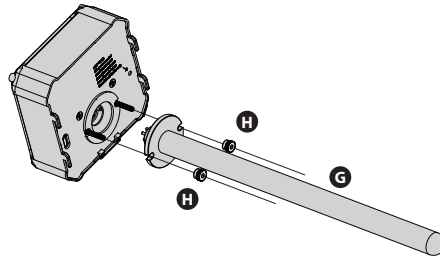


3 Connect to Power

1. See **Electrical Configuration** to connect Power Cord **B** by wiring directly to the air system's 24 VAC terminals or use the transformer (120V, 208V, 240V to 24V) included **D**.
2. Timer is factory set to 2 years so there is **no need to set timer for initial install**.

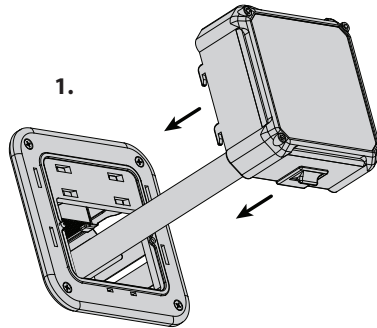
4 Mount UV Lamp

1. **Install lamp** before connecting to power.
2. Insert UV lamp **G** onto threaded posts, align the pins and make a firm connection.
3. Fasten using Quick Nuts **H**.



5 Install the Power Head

1. With the lamp installed and the power unplugged install the Power Head onto the Ductboard Mount.
2. Use your thumb to pull back on the spring-loaded latch and align the mounting hooks on the Power Head with matching slots on Ductboard Mount, push in firmly then down to snap in place, then release the latch.
3. Plug in power and APCO-ONE will be operational

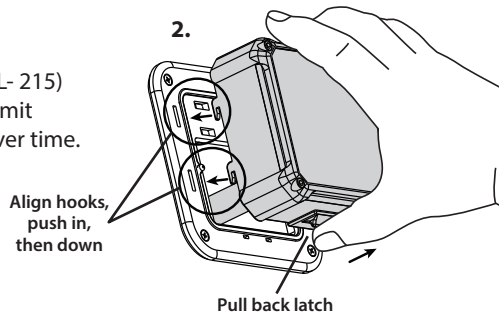


6 Lamp Replacement

Replace the UV lamp in APCO-ONE (model TUVL- 215) every 2 years. Note: UV lamps will continue to emit visible light but lose germicidal effectiveness over time.



TUVL-215



Align hooks, push in, then down

Pull back latch

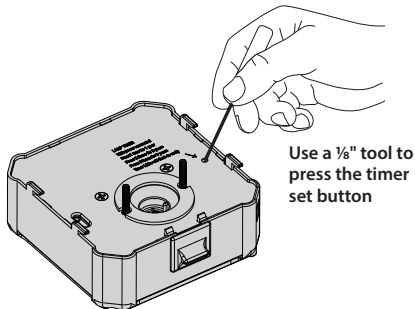


CAUTION!

UV lamps contain small amounts of mercury - dispose of lamps in accordance with local environmental regulations. For more information visit www.lamprecycle.org
Note: Use of replacement UV lamps other than TUVL- 215 voids warranty.

Replacement Lamp Timer Set

1. With the Power Head in hand connect power **without the lamp installed**.
2. For lamp replacement hold the timer set button for 5 seconds to enter timer mode. The LED will flash purple once indicating timer mode.
3. Within 5 seconds press the timer set button once, twice or thrice. LEDs will flash 1, 2, or 3 times indicating numbers of years set.



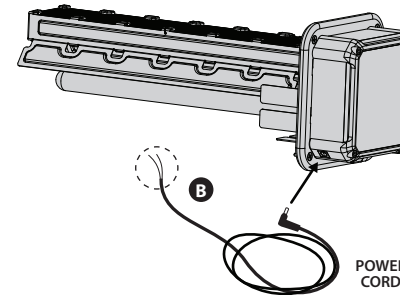
Use a 1/8" tool to press the timer set button

Electrical Configuration

IMPORTANT

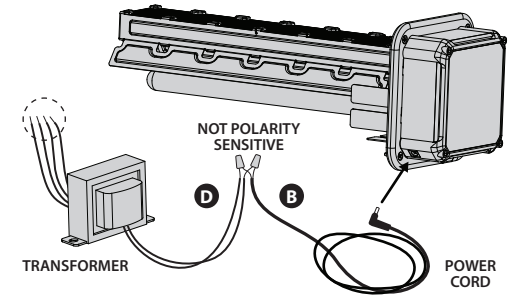
Before connecting to power determine if the transformer is needed. Turn off main power source before installation. Always wire according to local and national electrical codes.

IMPORTANT! Must be wired to constant power - do not connect to blower relay.



DIRECT TO HVAC PANEL

Power Cord **B** is connected directly to 18-32V constant power terminals in HVAC system control panel.



USE TRANSFORMER

Power Cord **B** wires are spliced to Transformer **D** 24V leads after Transformer has been connected to a high voltage source (see installation instructions included with transformer).