

BLUE-TUBE XL

COMMERCIAL UV-C SYSTEM



This system is designed to improve indoor air quality by sterilizing airborne viruses, bacteria, and allergens. It also saves energy and maintenance costs associated with commercial HVAC. A biofilm of only 0.002" can reduce efficiency by 37%! UV-C is the most cost-effective and practical solution.

Blue-Tube XL offers easy and flexible installation. It includes an advanced multi-voltage, water-resistant power supply. All parts (except lamps) are covered by a lifetime warranty. This system also improves indoor air quality by sterilizing airborne bacteria, viruses, and allergens.

FEATURES

- Fits coils up to 144" x 144"
- High-output 2 year UV-C lamps
- Everything included for most installations
- Scalable design for multi-lamp configurations
- Lifetime warranty on all parts except lamp(s)
- Water-resistant heavy-duty power supply
- Optional door interlock switch (TUVV-INTLCK)

BENEFITS

- 99.9% surface disinfection GUARANTEED
- Sterilizes mold, bacteria, viruses
- Disinfects coil & drain pan
- Improves HVAC system efficiency
- Improves indoor air quality

Commercial Series Accessories [View PDF](#)

Control Box



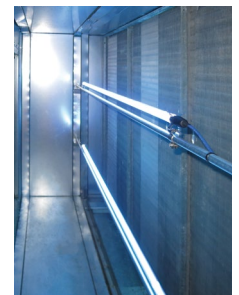
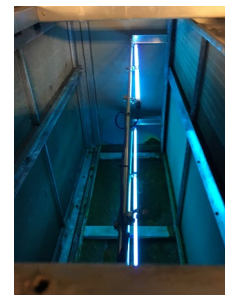
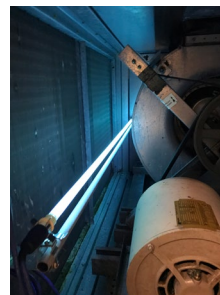
UV-C Radiometer



Safety Interlock Switch

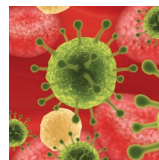


UV-C Lamp Shield



BLUE-TUBE XL

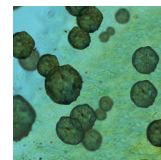
STERILIZES BIOLOGICAL PATHOGENS



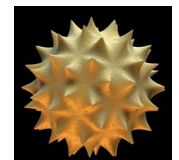
VIRUSES



BACTERIA



MOLD



ALLERGENS

BLUE-TUBE XL



SIZING CHART FOR AHU UNITS

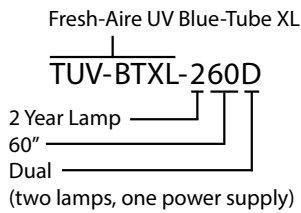
COIL WIDTH

COIL HEIGHT	COIL WIDTH										
	33"	40"	47"	56"	61"	72"	82"	98"	108"	120"	144"
24"	232S	232S	246S	246S	260S	260S	260S	246D	246D	260D	260D
32"	232S	232S	246S	246S	260S	260S	260S	246D	246D	260D	260D
40"	232S	232S	246S	246D	260S	260D	260D	246D (2)	246D (2)	260D	260D
56"	232D	232D	246D	246D	260D	260D	260D	246D (2)	246D (2)	260D (2)	260D (2)
62"	232D	232D	246D	246D	260D	260D	260D	246D (2)	246D (2)	260D (2)	260D (2)
72"	232D	232D	246D	246D	260D	260D	260D	246D (2)	246D (2)	260D (2)	260D (2)
82"	232D	232D	246D	246D	260D	260D	246D (2)	246D (3)	246D (3)	260D (3)	260D (3)
98"	232D (2)	232D (2)	246D (2)	246D (2)	260D (2)	260D (2)	246D (3)	246D (4)	246D (4)	260D (4)	260D (4)
108"	232D (2)	232D (2)	246D (2)	246D (2)	260D (2)	260D (2)	246D (3)	246D (4)	246D (4)	260D (4)	260D (4)
120"	232D (2)	232D (2)	246D (2)	246D (2)	260D (2)	260D (2)	246D (3)	246D (4)	260D (4)	260D (4)	260D (4)
144"	232D (2)	232D (2)	246D (2)	246D (2)	260D (2)	260D (4)	246D (4)	246D (4)	260D (4)	260D (4)	260D (4)

SIZING CHART FOR RTUS

1 - 3 Ton	4 - 5 Ton	6 - 10 Ton	12-14 Ton	16-20 Ton	25-30 Ton	35-40 Ton	45-50 Ton
TUV-200-DI or TUV-APCO-MAG15-ER2	TUV-200-DI or TUV-APCO-MAG15-ER2	232-S	246-S	246-D	260-D	260-D (2)	260D (3)

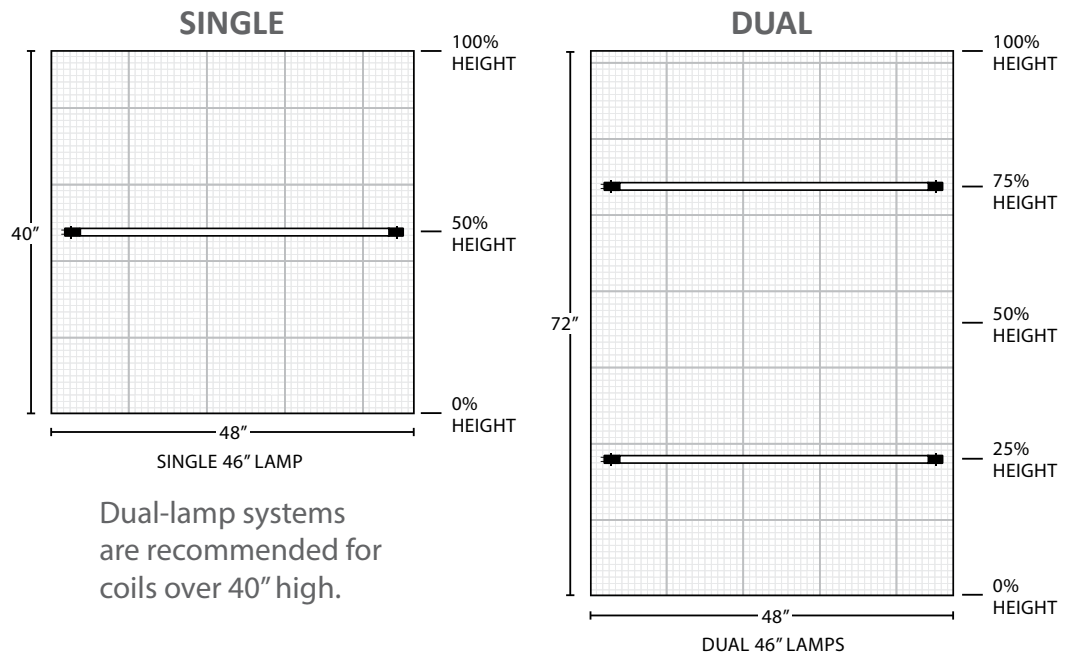
PART NUMBER KEY



(2) = 2 Complete Systems
 (3) = 3 Complete Systems
 (4) = 4 Complete Systems



SINGLE & DUAL LAMP PLACEMENT



WWW.FRESH-AIREUV.COM



SALES@FRESH-AIREUV.COM

800-741-1195

BTXL-SPECS 090920