

# Airborne Duct System

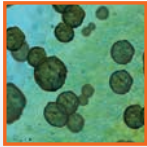
Maximize airborne kill of dangerous pathogens such as viruses, bacteria, and mold spores with the Fresh-Aire UV<sup>®</sup> Commercial Series Airborne Duct System (ADS). This duct-mounted HVAC UVGI system is designed for intensive airstream UV-C irradiation. The system features from 2 to 6 Fresh-Aire UV<sup>®</sup> high-output germicidal UV lamps which sterilize airborne biological contaminants as they pass by. The ADS system is fully customizable and can be configured to fit a wide variety of installation parameters.

This system is not recommended for surface disinfection of any materials that are not UV light resistant. Instead, use our Tubular Rack System or Modular Rack System with Fresh-Aire UV<sup>®</sup> normal-output germicidal UV lamps.

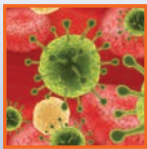
Effective against these airborne contaminants



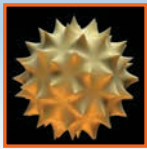
Bacteria



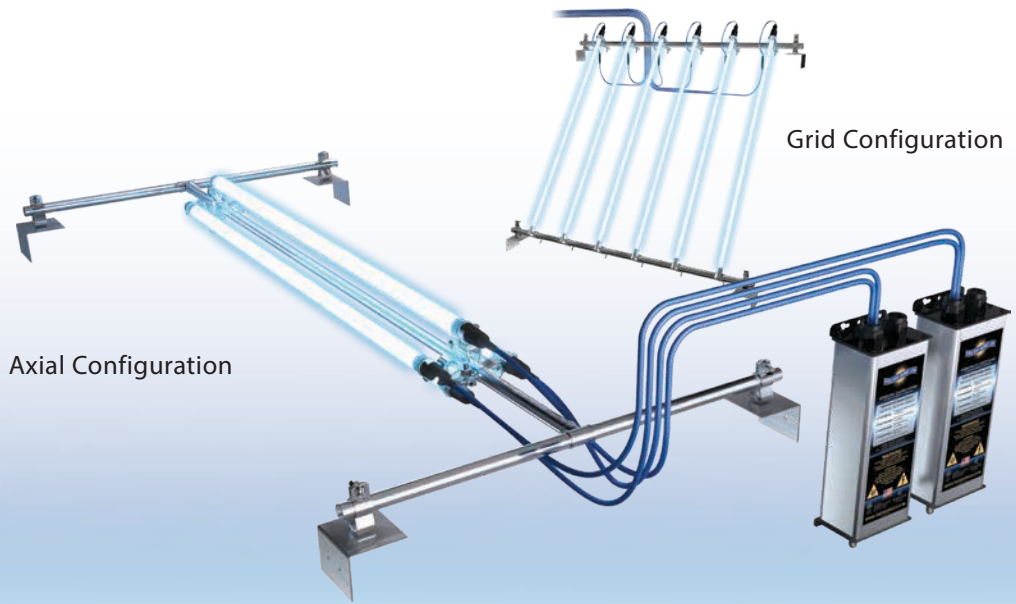
Mold



Viruses



Allergens



Axial Configuration

Grid Configuration



The ADS system is ideal for applications such as hospitals and yoga studios where airborne pathogens are a health risk.

## FEATURES

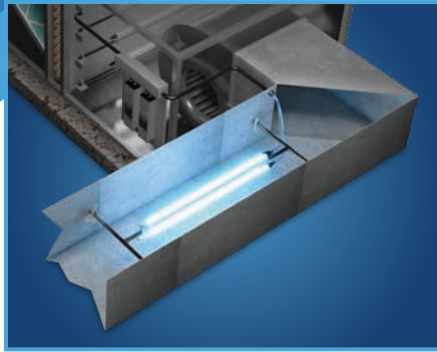
- Ideal for airborne treatment of contaminants
- Single or multi-lamp configuration
- High output water-resistant lamp(s)
- Water-resistant power supply
- Lifetime warranty on all parts except lamp(s)
- Includes 10' cable & mounting hardware
- Optional Teflon<sup>®</sup> lamp coating

## BENEFITS

- Reduces odors & kills airborne microbial contaminants
- Improves indoor air quality
- Effective chemical-free air disinfection
- Cost effective
- Reduces worker exposure to dangerous chemicals



**FRESH-AIRE UV<sup>®</sup>**  
**COMMERCIAL**  
**SERIES**



## Airborne Duct System

- Kills airborne mold, bacteria, viruses, allergens
- High-output UV-C lamps
- Improves indoor air quality
- Chemical-free disinfection
- Duct-mounted away from UV sensitive materials in AHU

KIT INCLUDES	POWER SUPPLY DIMENSIONS
Remote power supply, 10' lamp cables, 6' power cord, UV lamp, mounting hardware, cable strain relief, view port, 36" x 0.5" EMT conduit 4 pieces	13"L x 3.75"W x 2.5"H

KIT PART #	LAMP DESCRIPTION	LAMP PART #	POWER SUPPLY	POWER SUPPLY CE
<input type="checkbox"/> TUVCL-115-50-50	15" 9000 hrs, reg output, 1 lamp, 50% ozone	TUVCL-115-50-50	TUVP-1S-I	
<input type="checkbox"/> TUVCL-232HO	32" 18000 hrs, high output, 2 lamps	TUVCL-232HO	TUVCPS-H32D	TUVCPS-H32D-CE
<input type="checkbox"/> TUVCL-232HO	32" 18000 hrs, high output, 4 lamps	TUVCL-232HO	TUVCPS-H32D x2	TUVCPS-H32D-CE x2
<input type="checkbox"/> TUVCL-232HO	32" 18000 hrs, high output, 6 lamps	TUVCL-232HO	TUVCPS-H32D x3	TUVCPS-H32D-CE x3
<input type="checkbox"/> TUVCL-232HO-TF	32" 18000 hrs, high output, 2 lamps, Teflon <sup>®</sup>	TUVCL-232HO-TF	TUVCPS-H32D	TUVCPS-H32D-CE
<input type="checkbox"/> TUVCL-232HO-TF	32" 18000 hrs, high output, 4 lamps, Teflon <sup>®</sup>	TUVCL-232HO-TF	TUVCPS-H32D x2	TUVCPS-H32D-CE x2
<input type="checkbox"/> TUVCL-232HO-TF	32" 18000 hrs, high output, 6 lamps, Teflon <sup>®</sup>	TUVCL-232HO-TF	TUVCPS-H32D x3	TUVCPS-H32D-CE x3
<input type="checkbox"/> TUVCL-246HO	46" 18000 hrs, high output, 2 lamps	TUVCL-246HO	TUVCPS-H46D	TUVCPS-H46D-CE
<input type="checkbox"/> TUVCL-246HO	46" 18000 hrs, high output, 4 lamps	TUVCL-246HO	TUVCPS-H46D x2	TUVCPS-H46D-CE x2
<input type="checkbox"/> TUVCL-246HO	46" 18000 hrs, high output, 6 lamps	TUVCL-246HO	TUVCPS-H46D x3	TUVCPS-H46D-CE x3
<input type="checkbox"/> TUVCL-246HO-TF	46" 18000 hrs, high output, 2 lamps, Teflon <sup>®</sup>	TUVCL-246HO-TF	TUVCPS-H46D	TUVCPS-H46D-CE
<input type="checkbox"/> TUVCL-246HO-TF	46" 18000 hrs, high output, 4 lamps, Teflon <sup>®</sup>	TUVCL-246HO-TF	TUVCPS-H46D x2	TUVCPS-H46D-CE x2
<input type="checkbox"/> TUVCL-246HO-TF	46" 18000 hrs, high output, 6 lamps, Teflon <sup>®</sup>	TUVCL-246HO-TF	TUVCPS-H46D x3	TUVCPS-H46D-CE x3
<input type="checkbox"/> TUVCL-260HO	60" 18000 hrs, high output, 2 lamps	TUVCL-260HO	TUVCPS-H60D	TUVCPS-H60D-CE
<input type="checkbox"/> TUVCL-260HO	60" 18000 hrs, high output, 4 lamps	TUVCL-260HO	TUVCPS-H60D x2	TUVCPS-H60D-CE x2
<input type="checkbox"/> TUVCL-260HO	60" 18000 hrs, high output, 6 lamps	TUVCL-260HO	TUVCPS-H60D x3	TUVCPS-H60D-CE x3
<input type="checkbox"/> TUVCL-260HO-TF	60" 18000 hrs, high output, 2 lamps, Teflon <sup>®</sup>	TUVCL-260HO-TF	TUVCPS-H60D	TUVCPS-H60D-CE
<input type="checkbox"/> TUVCL-260HO-TF	60" 18000 hrs, high output, 4 lamps, Teflon <sup>®</sup>	TUVCL-260HO-TF	TUVCPS-H60D x2	TUVCPS-H60D-CE x2
<input type="checkbox"/> TUVCL-260HO-TF	60" 18000 hrs, high output, 6 lamps, Teflon <sup>®</sup>	TUVCL-260HO-TF	TUVCPS-H60D x3	TUVCPS-H60D-CE x3



CE For CE compliant parts  
 add -CE to the part number  
 Example: TUVCL-232HO-CE



### Safety & Control

Get the most out of your installation with the optional **Safety Interlock Switch** and **UVGI System Control Box**.



### Design it Right

Our free BlueCalc™ service/software makes system configuration & ROI estimation easy.